

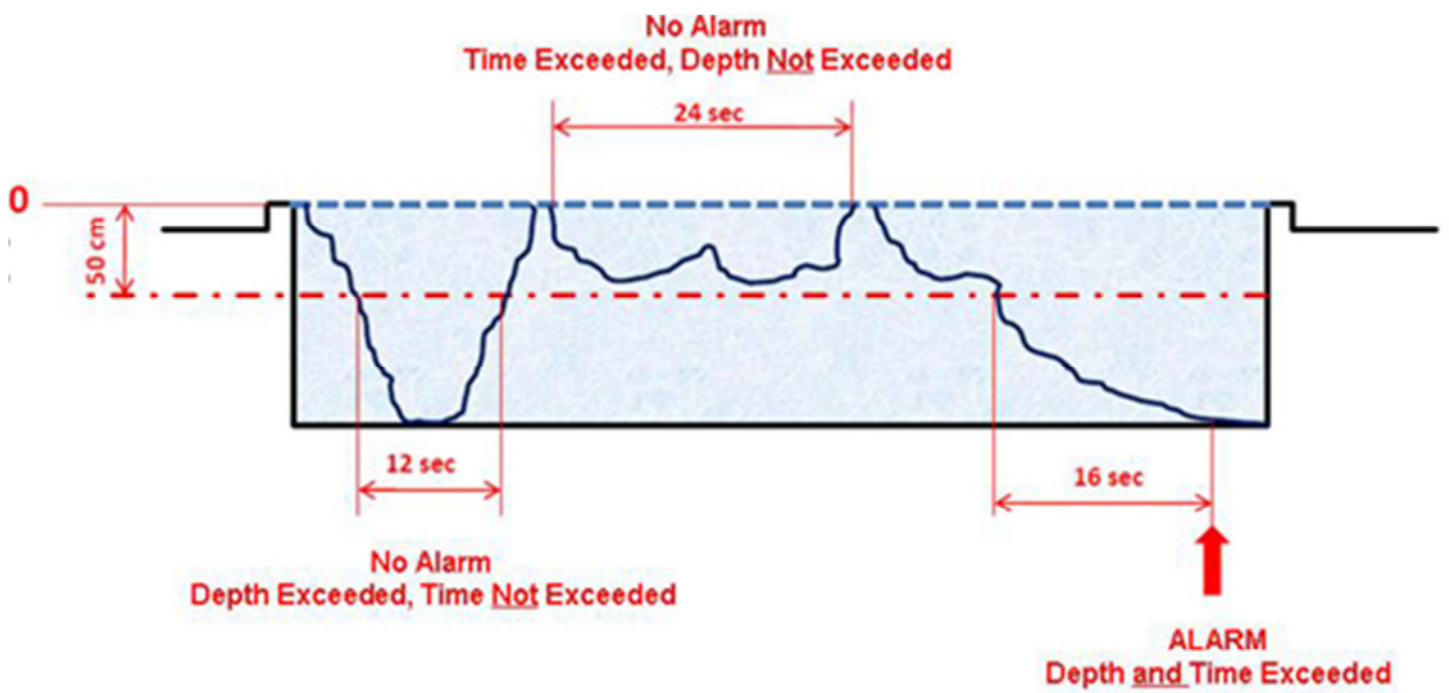


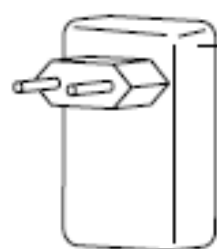
Instruction Manual

BlueFox Monitoring Bracelet

Example alarm parameter BlueFox monitoring bracelet: 50 cm –15 sec

Parameter-Setting BlueFox-Monitoring Bracelet: **50 cm – 15 sec**





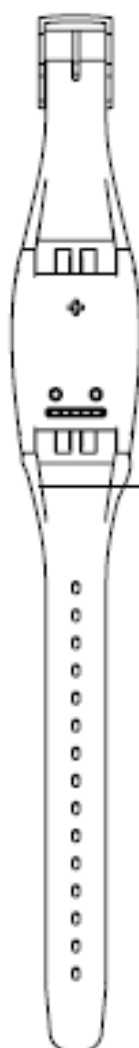
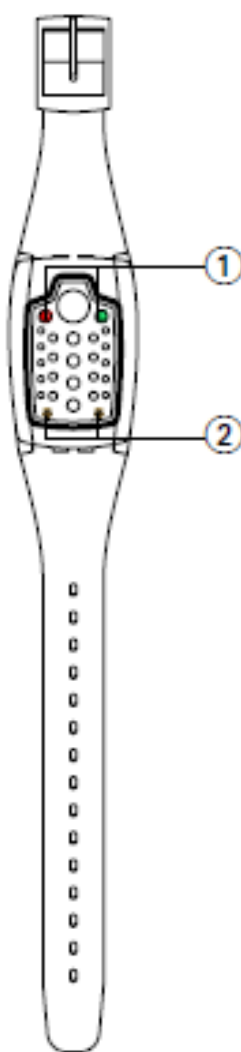
USB plug-in mains adapter



USB cable



Magnetic adapter
(connects monitoring bracelet/
USB cable)



Monitoring bracelet (1 pcs.)

① Red and green LEDs

② Water contacts
(gold-plated)



Test unit

11 Monitoring bracelet

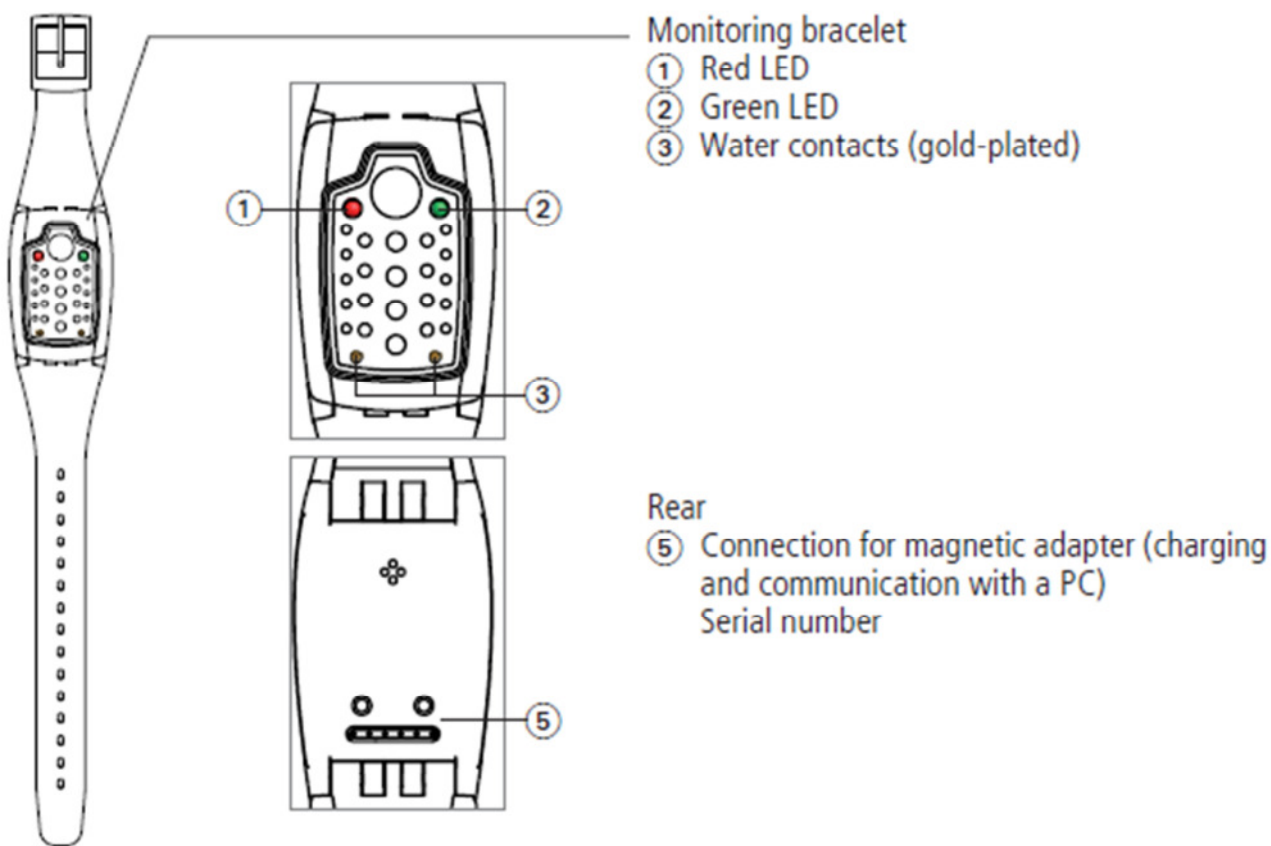


Fig. 11 Monitoring bracelet

11.1 Preparation

- Lightly shaking the monitoring bracelet will cause it to enter standby mode.
- When the green LED is flashing the monitoring bracelet is ready for use.
- Charge the battery if the red LED on the monitoring bracelet flashes at one-second intervals (when the unit is out of the water). See [Charging the monitoring bracelet's battery, P. 33](#).
- Before first use or if the LEDs do not flash: Charge the battery, See [Charging the monitoring bracelet's battery, P. 33](#).
- Set the alarm depth and alarm time, see [Programming the alarm depth and time, P. 34](#).
- Ensure that all persons in the swimming pool area are wearing a monitoring bracelet.
- Begin using the alarm box, see [Using the System, P. 26](#).

11.2 Charging the monitoring bracelet's battery

- Charge the battery before first use.
- Charge the battery if the red LED on the monitoring bracelet flashes at one-second intervals (when the unit is out of the water).

Note: If the red LED on the monitoring bracelet begins to flash, the monitoring bracelet can still be used until the end of the day.



Danger! Electric shock risk!

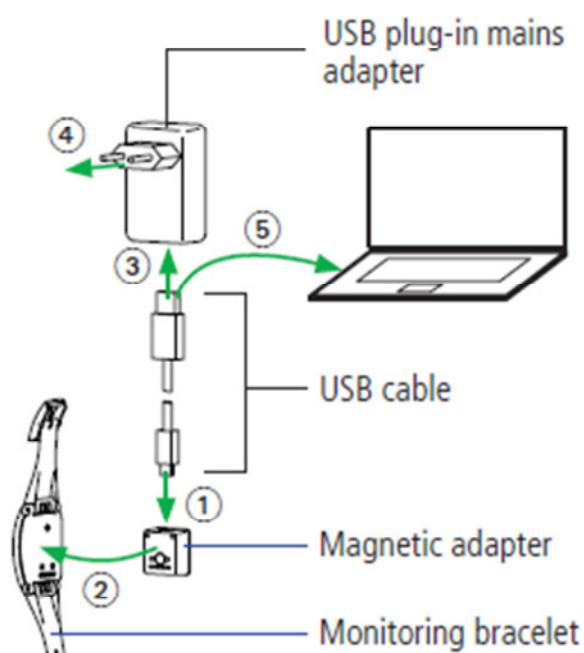
Only use the USB plug-in mains adapter, USB cable and magnetic adapter in dry rooms.



Caution!

Humidity may damage USB plug-in mains adapter, USB cable and magnetic adapter.

Only charge the monitoring bracelet in dry rooms. Before connecting the monitoring bracelet dry it using a dry cloth.



- Connect the USB cable (small plug) to the magnetic adapter ①.
- Connect the magnetic adapter to the monitoring bracelet ② (note correct alignment).
- **Charging using the USB mains adapter:**
Connect the USB cable (large plug) to the USB plug-in mains adapter ③ and connect the USB plug-in mains adapter to the electricity supply ④.
- **Charging via a PC USB connection:**
Connect the USB cable (large plug) to the PC ⑤ and power-up the PC.

Charging in progress: Red LED flashes every 5 seconds

Charging complete: Green LED flashes every 5 seconds

Time required for a full charge: Approx. 2-3 hours

- After charging: Disconnect the monitoring bracelet from the magnetic adapter. Remove the USB plug-in mains adapter from the electricity supply.

11.3 Programming the alarm depth and time

The alarm depth and alarm time are programmed using the BlueFox control software. Installation of the software is described in the section [Installing the BlueFox Control software, P. 37](#).



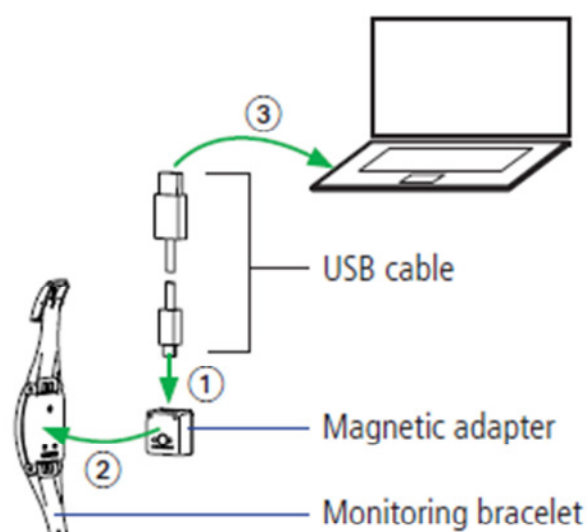
Caution!

Humidity may damage USB plug-in mains adapter, USB cable and magnetic adapter.


Only connect monitoring bracelets to the PC in dry rooms.

Before connecting monitoring bracelets, dry them using a dry cloth.

- Connecting a monitoring bracelet to a PC:



- Connect the USB cable (small plug) to the magnetic adapter (1).
- Connect the magnetic adapter to the monitoring bracelet (2) (note correct alignment).
- Connect the USB cable (large plug) to the PC (3).

- Allocate each person or group of people an individual alarm depth and alarm time together with a monitoring bracelet colour.
- Enter the alarm depth and alarm time together with the associated monitoring bracelet colour into the [Configuration table, P. 50](#).
- Open the BlueFox Control software:
Double-click the  symbol on the desktop or navigate via **Start > Program > BlueFox Control**.

BlueFox Control (Version 2.00)

BlueFox Control

Deep Blue

Monitoring Bracelet Information / Status
Software Version: 1.06

Battery: OK Charging
Alarm: No Alarm Alarm occurred

Call Status
Clear Alarm

BLUE FOX
POOL SAFETY SYSTEM

Current Active Alarm Parameters

Time: 5 15 25 35 45 55 65 75 85 95
Seconds

Depth: 5 15 25 35 45 55 65 75 85 95 105 115 125
cm
2 6 10 14 18 22 26 30 33 37 41 45 49
inch

Manual adjustment (move the bar)

Time: 5 15 25 35 45 55 65 75 85 95
Seconds

Depth: 5 15 25 35 45 55 65 75 85 95 105 115 125
cm
2 6 10 14 18 22 26 30 33 37 41 45 49
inch

Preset (click on the symbol)

Save New Settings

Passive Child Non Swimmer Child Swimmer Adult Non Swimmer Adult Swimmer


Reset

Verify Settings

WARNING: Preset Buttons are recommendations only!

Select the alarm depth and associated alarm time ①:

Select a pre-set value ② or use the slider ③ to enter the pre-defined alarm depth and alarm time.

- Click **Save New Settings** ④ to transfer the settings to the monitoring bracelet.
- Click **Verify Settings** ⑤ to read and verify the settings saved to the monitoring bracelet.
- Disconnect the monitoring bracelet from the magnetic adapter.
- Close the BlueFox control software: Close the window .

11.4 Calling the status / Clearing the alarm / Resetting

The screenshot shows the BlueFox Control software interface. At the top, it says "BlueFox Control" and "Deep Blue". The main area is titled "Monitoring Bracelet Information / Status" with a circled 6 next to it. Below this, there are sections for "Current Active Alarm Parameters" and "Manual adjustment". The "Current Active Alarm Parameters" section has a "Verify Settings" button and two sliders for "Time" (Seconds) and "Depth" (cm and inch). The "Manual adjustment" section has two sliders for "Time" and "Depth". Below these are "Preset" buttons for "Passive", "Child Non Swimmer", "Child Swimmer", "Adult Non Swimmer", and "Adult Swimmer". A "Reset" button is located at the bottom left, with a circled 8 next to it. A "Save New Settings" button is also present.

Monitoring Bracelet Information / Status **6**

Software Version: 1.06

Battery: OK Charging Alarm: No Alarm Alarm occurred

Call Status **7** Clear Alarm

BLUE FOX POOL SAFETY SYSTEM

Current Active Alarm Parameters **Verify Settings**

Time: 5 15 25 35 45 55 65 75 85 95

Depth: cm 5 15 25 35 45 55 65 75 85 95 105 115 125 inch 2 6 10 14 18 22 26 30 33 37 41 45 49

Manual adjustment (move the bar)

Time: 5 15 25 35 45 55 65 75 85 95

Depth: cm 5 15 25 35 45 55 65 75 85 95 105 115 125 inch 2 6 10 14 18 22 26 30 33 37 41 45 49

Preset (click on the symbol) Passive Child Non Swimmer Child Swimmer Adult Non Swimmer Adult Swimmer

Save New Settings

8 Reset

WARNING: Preset Buttons are recommendations only!

- Click **Call Status** to retrieve the battery and alarm status **6**.
- **Clear Alarm** **7**.
- Click **Reset** **8**, if the monitoring bracelet is not recognised or if an error message appears after the monitoring bracelet is connected. Following a reset, the alarm depth and associated alarm time must be re-entered, see [Programming the alarm depth and time, P. 34](#).

12 BlueFox Control Software

12.1 Hardware requirements

For the installation and problem-free use of the BlueFox control software a Windows compatible PC with the following specifications is required:

CPU at least 1 GHz (1.5 GHz recommended)

RAM: min. 512 MB

Display: at least XGA (1024x768)

Hard disk: at least 50 MB free capacity

USB interface

12.2 PC operating system requirements

Recommended operating systems for the BlueFox control software:

MS Windows 7, 32 bit or 64 bit

MS Vista™, Service Pack 1 or higher

MS Windows XP™, Service Pack 2 or higher

MS Windows 2000™, Service Pack 4 or higher

Internet connection (for downloading the software)

The operating system in use must be working properly and be fully maintained. The respective current Service Packs must be installed.

12.3 Installing the BlueFox Control software

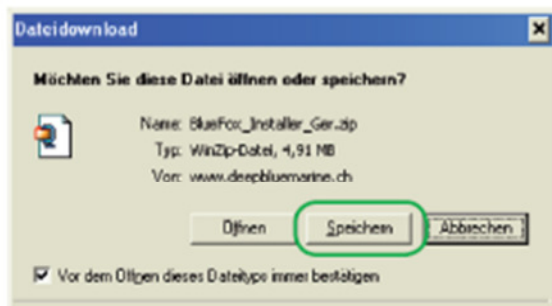
- Connect the PC to the Internet.
- Navigate to www.bluefox-poolsafety.com in your browser.



- Select your required language.
- Click Downloads.



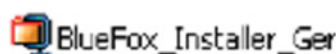
- Click BlueFox.



- Click **Save**, select the destination folder, then **Save**. The download will start.



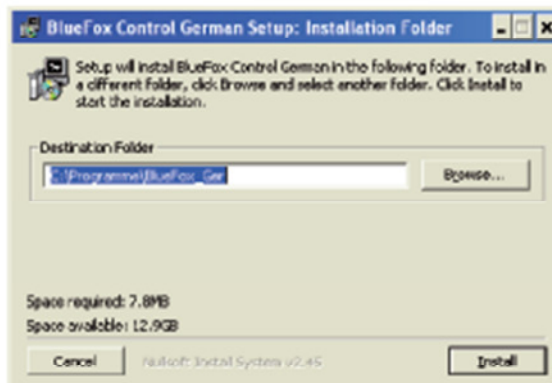
- **Open folder**.



- Double-click on the Zip file.

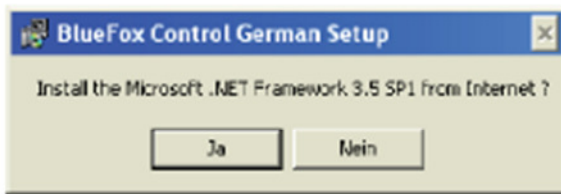


- Double-click on the Exe file.



- Check the destination folder and if desired, change the destination by clicking **Browse**.

- Click **Install**. Installation starts.



Installation of the BlueFox control software is interrupted. The BlueFox control software requires the Microsoft .NET Framework 3.5 program.

- Click **Yes** to download and install the Microsoft .NET Framework 3.5 program. This process can take several minutes



- Accept the software license.

- Click **Install**.

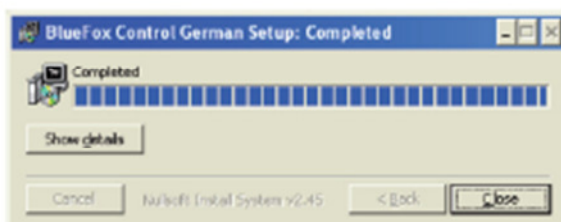


The process starts.



The Microsoft .NET Framework 3.5 program has been installed.

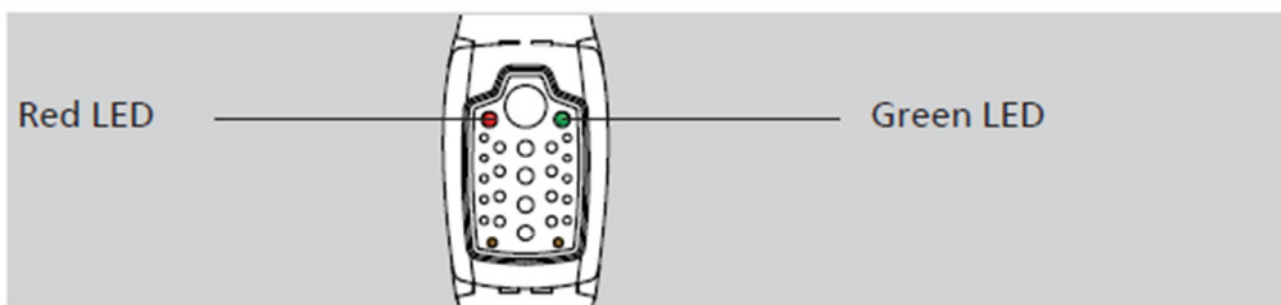
Installation of the BlueFox control Software is automatically continued and completed.



- Click **Close**.

13 Meaning of the monitoring bracelet LED displays

13.1 The monitoring bracelet in use



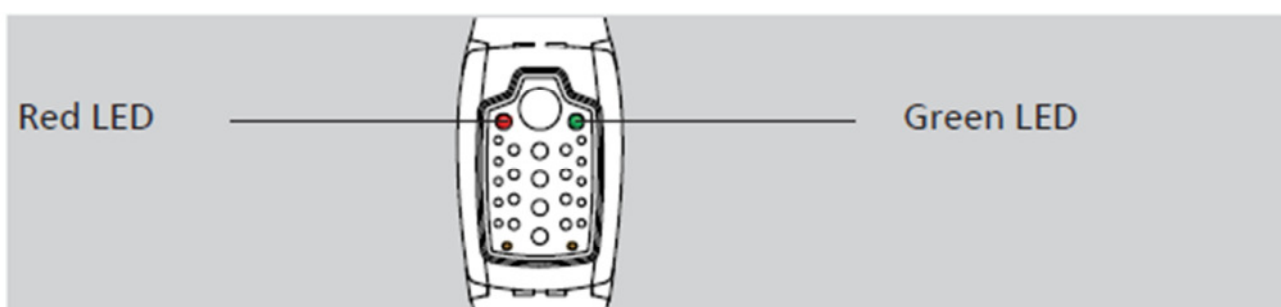
Red flashes 1x /sec.:
Low battery.
• Charge the battery

Green flashes every 5 sec.:
Monitoring bracelet is
ready for use (in the water
the LED double-flashes).

Red flashes 5-times:
Alarm sent.
• See [Alarm \(active mode\), P. 26](#)
• See [Resetting the monitoring bracelet, P. 27](#)

Further LED flash codes are described in the section [Troubleshooting, P. 42](#).

13.2 The monitoring bracelet connected to a PC or charging station



Red flashes every 5 seconds:
Battery charging

Green flashes every 5
seconds:
Battery is charged

Steady green:
Communicating with PC

14 Maintenance / Service

- Dry the monitoring bracelet with a cloth after use.
- Charge the battery if the red LED on the monitoring bracelet flashes at one-second intervals (when the unit is out of the water). See [Charging the monitoring bracelet's battery, P. 33](#).
- Occasionally clean the water contacts on the monitoring bracelet using methylated spirits.
- Protect the water contacts from soiling (e.g. sun cream).
- Clean the alarm box and cable with a damp cloth. Never use cleaning agents that contain solvents.

15 Troubleshooting

Problem	Possible cause	Solution
An alarm is not triggered during the test with a monitoring bracelet.	The alarm box is not connected to the power supply.	Connect the alarm box to the power supply.
	The monitoring bracelet's battery is discharged (no LEDs illuminate).	See Charging the monitoring bracelet's battery, P. 33 .
	The alarm depth set on the monitoring bracelet is deeper than the immersion depth.	Verify the monitoring bracelet settings.
	The monitoring bracelet does not detect water.	Clean the water contacts, see Maintenance / Service, P. 42 .
	The pool sensor is incorrectly fitted into the mounting ring.	Refit the pool sensor with the word "Sensor" facing into the swimming pool.
During the test the alarm was not triggered from all parts of the swimming pool	The pool sensor cannot receive the alarm.	Reposition the pool sensor.

Problem	Possible cause	Solution
During operation the alarm box transmits a short tone sequence.	Power failure	Have the mains connection checked by an approved electrician. See Safety notes, P. 6 .
An alarm activates for 2 seconds during operation	Interruption of the pool sensor connection (>2 seconds)	The pool must be monitored by a person. Check the pool sensor connection.
The PC does not detect the monitoring bracelet, or an error message appears on the PC.	No connection	Check the connections (PC / USB cable / magnetic adapter / monitoring bracelet). Reset the monitoring bracelet, see Calling the status / Clearing the alarm / Resetting, P. 36 .
Monitoring bracelet: The LEDs do not illuminate.	The monitoring bracelet's battery is discharged.	See Charging the monitoring bracelet's battery, P. 33
Monitoring bracelet: The green LED does not double flash in the water.	The monitoring bracelet does not detect water.	Clean the water contacts, see Maintenance / Service, P. 42
Monitoring bracelet: Red double flashes.	Alarm being transmitted (monitoring bracelet in the water).	See Alarm (active mode), P. 26 .
Monitoring bracelet: Red flashes in triple time.	Alarm transmitted, low battery.	See Alarm (active mode), P. 26 . Batterie laden, see Charging the monitoring bracelet's battery, P. 33 .
Monitoring bracelet: Red or green flash or double flash.	Low battery (monitoring bracelet in the water).	Charging the battery, see Charging the monitoring bracelet's battery, P. 33 .

Deep Blue AG

Engenbühl 130 | CH-5705 Hallwil | Switzerland
Phone: +41 62 767 77 99 | Email: info@deepblue.ch
www.bluefox-poolsafety.com

SWISS MADE  TECHNOLOGY FOR SAFETY